

### ● Features:

- \* Dial: 2.5"(63mm), 3"(75mm) white aluminium dials with black and red marking
- \* Case style: Black painted steel, black plastic
- \* Stem: Brass
- \* Window: Plastic, glass
- \* Measurement Material: Pressure: Bourdon tube (Copper alloy), Temperature: Bimetal coil

### ● Applications:

- \* To determine pressure or temperature levels where test plugs are installed in the process
- \* Used at start-up or periodic testing of pipelines or pressure vessels
- \* Chilled and hot water systems, refrigeration and hydronics, prototype equipment, new building construction, building maintenance

### Specifications

| Specifications      |   |
|---------------------|---|
| Dial                | 2.5"(63mm), 3"(75mm),                             |
| Case                | Black painted steel                               |
| Lens                | Poly carbonate window, armored glass              |
| Socket              | Brass   |
| Connection          | 1/4"NPT or 1/2"NPT                                |
| Movement            | Brass   |
| Pointer             | Black aluminium                                   |
| Welding             | Silver alloy                                      |
| Over-pressure Limit | 25% of full scale value                           |
| Working Pressure    | Maximum 80% of full scale value                   |
| Accuracy            | Pressure: $\pm 3-2-3\%$<br>Temperature: $\pm 3\%$ |

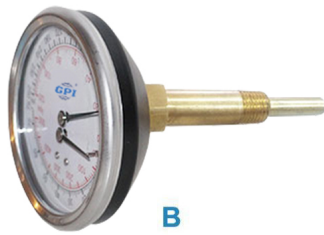
### ● 2.5" Back Conn.



### ● 2.5" Extension Back Conn.



### ● 3" Back Connection



### ● 3" Bottom Connection





# Tridicator Gauge Pressure & Temperature Gauge

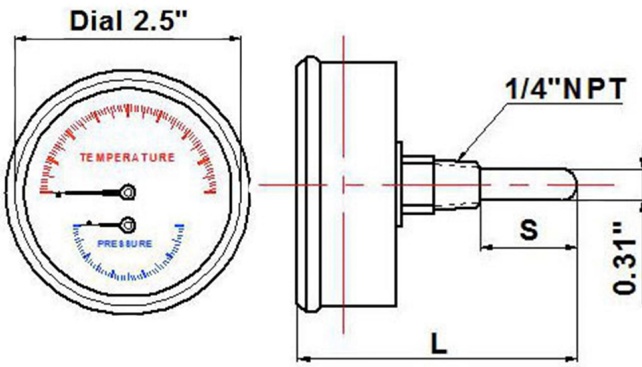
## TPT Series

### TPT Series Product Code

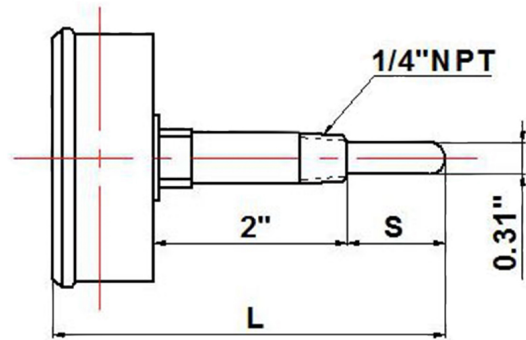
| Dial                          | 2.5"(63mm)                 |                        | 3"(75mm)          |                        |                            |
|-------------------------------|----------------------------|------------------------|-------------------|------------------------|----------------------------|
| Connection                    | 1/4" NPT<br>Extension Back | 1/4"NPT<br>Center Back | 1/2"NPT<br>Bottom | 1/2"NPT<br>Center Back | 1/2" NPT<br>Extension Back |
| 0-60psi, 70/320°F & 20/ 160°C | TG25E1                     | TG25C1                 | TG32B1            | TG32C1                 | TG32E1                     |
| 0-75psi, 70/320°F & 20/160°C  | TG25E2                     | TG25C2                 | TG32B2            | TG32C2                 | TG32E2                     |
| 0-100psi,70/320°F & 20/160°C  | TG25E3                     | TG25C3                 | TG32B3            | TG32C3                 | TG32E3                     |
| 0-200psi,70/320°F & 220/160°C | TG25E4                     | TG25C4                 | TG32B4            | TG32C4                 | TG32E4                     |

Other ranges and stem lengths available, and dual scales C&F or single scale °C available.

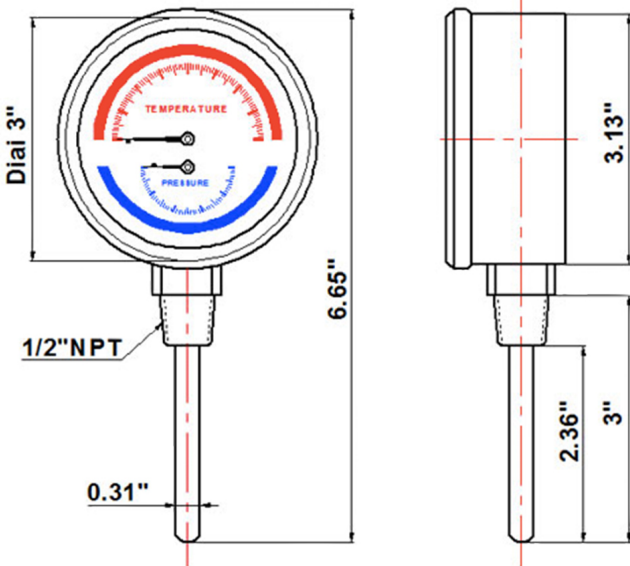
### 2.5" Back Connection



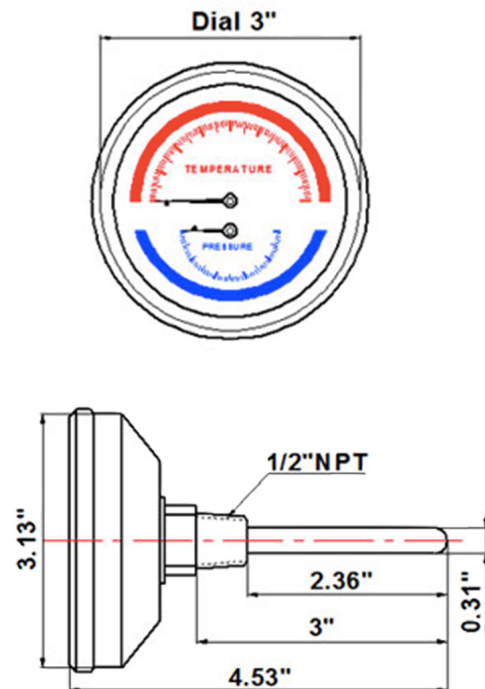
### 2.5" Extension Back Connection



### 3" Bottom Connection



### 3" Back Connection



### 3" Extension Back Connection

